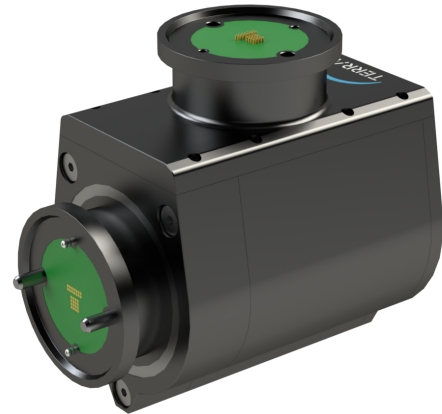




# TerraFlex M9

The TerraFlex M9 servo actuator is engineered for versatility and performance in heavy-duty, Earth-based applications. Each TerraFlex M-Series actuator comes equipped with Novium’s quick connect interface for seamless integration with other M-Series modules used for the construction of the highly customizable multi-degree-of-freedom TerraNova Modular Robotic Arm Systems.



DESCRIPTION	UNIT	VALUE
Supply Voltage	VDC	48
Rated Torque	Nm	780
Rated Output Power	W	1085
Maximum Output Speed	RPM	10
Position Sense		Absolute
Position Sense Resolution	Deg	0.01
Control Communication Bus		CAN
Ambient Temperature Range	°C	10 - 50
Mass	kg	11.8
Output Interface		Terra 9M
Mounting Interface		Terra 9F
Fluid Passthrough	Qty	2
Passthrough Communication Bus		Ethernet (100BASE-TX)
Passthrough Power Bus	Qty	2
Dimension A	mm	160
Dimension B	mm	265
Dimension C	mm	252

## FEATURES

- Seamless Integration with Terra M-Series Modules
- Power and Data Pass Thru via Integrated Slip Ring
- Continuous 360 Degree Rotation
- Precision Position Control
- High Torque Density
- Power-Off Brake
- Optional Fluid Rotary Union (Single or Dual Channel)
- Ultra Low Backlash
- Integrated Motor Controller
- Torque, Speed, and Position Control Modes

