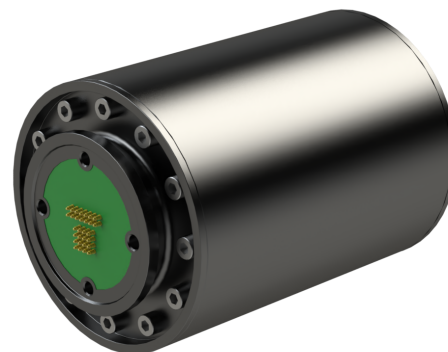




TerraSense M7

Novium’s TerraSense M7 6-axis load cell is precision engineered for medium-duty Earth-based applications enabling the TerraNova Arm to precisely measure force and torque in all six degrees of freedom. Equipped with Novium’s quick connect interface, the TerraSense M7 load cell can be seamlessly integrated with other M7 sized modules to internally transfer power, data, and fluid or air between M-Series modules.



DESCRIPTION	UNIT	VALUE
Supply Voltage	VDC	48
Load Sense Degrees of Freedom		6
Fx, Fy Full Range	N	± 8000
Fz Full Range	N	± 20000
Tx, Ty Full Range	Nm	± 500
Tz Full Range	Nm	± 500
Calibration Range Options		Full, Half, Quarter
Calibration Range Accuracy	% of FS	± 1
Control Communication Bus		CAN
Ambient Temperature Range	°C	10 to 50
Mass	kg	4.5
Fluid Passthrough	Qty	2
Passthrough Communication Bus		Ethernet (100BASE-TX)
Passthrough Power Bus	Qty	2
Dimension A	mm	130
Dimension B	mm	130

FEATURES

- Seamlessly Integration with Terra-M Modules
- High Precision Force Torque Measurement
- Rugged Construction
- High Sensitivity / Low Noise
- Integrated Signal Conditioning

