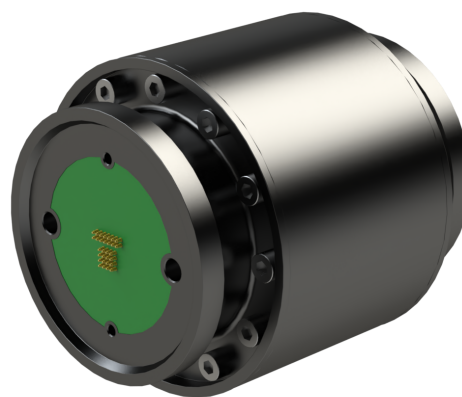




TerraSense M9

Novium’s TerraSense M9 6-axis load cell is precision engineered for heavy-duty Earth-based applications enabling the TerraNova Arm to precisely measure force and torque in all six degrees of freedom. Equipped with Novium’s quick connect interface, the TerraSense M9 load cell can be seamlessly integrated with other M9 sized modules to internally transfer power, data, and fluid or air between M-Series modules.



DESCRIPTION	UNIT	VALUE
Supply Voltage	VDC	48
Load Sense Degrees of Freedom		6
Fx, Fy Full Range	N	± 10000
Fz Full Range	N	± 25000
Tx, Ty Full Range	Nm	± 750
Tz Full Range	Nm	± 750
Calibration Range Options		Full, Half, Quarter
Calibration Range Accuracy	% of FS	± 1
Control Communication Bus		CAN
Ambient Temperature Range	°C	10 to 50
Mass	kg	11.8
Fluid Passthrough	Qty	2
Passthrough Communication Bus		Ethernet (100BASE-TX)
Passthrough Power Bus	Qty	2
Dimension A	mm	156
Dimension B	mm	175

FEATURES

- Seamlessly Integration with Terra-M Modules
- High Precision Force Torque Measurement
- Rugged Construction
- High Sensitivity / Low Noise
- Integrated Signal Conditioning

